



# Sustainable solutions in polyolefins

Towards a Circular Economy





Join us!

# Innovating for a sustainable world

At Repsol, we believe in the circular economy. We focus our innovation solely on our customers' needs to create highly differentiated products compliant with even the strictest standards.

Our Repsol Reciclex® range of sustainable polyolefins comprehends **over 30 grades with a high content of mechanically recycled material**; a **full Repsol range from chemical recycling** and an **entire polyolefin bio-based range**, including **first-generation Bio (1G) from sustainably sourced crops**, and **second-generation bio-based circular polyolefins (2G) from renewable waste**.

Our mechanically recycled materials deliver outstanding technical performance certified by the Recyclclass standard and are adapted to the different application needs.

Our ISCC Plus certified circular polyolefins from chemically recycled plastic waste and bio-based ranges maintain the same properties and quality as the original raw materials.

Sustainability is essential to our forward-looking vision and the shared commitment undertaken by everyone at Repsol to become net zero emissions by 2050.

REPSOL  
**Reciclex** 



# Repsol. A global multi-energy company

## With over 8 decades of experience

We are leading the energy transition by being the **first company in the energy sector to set the goal of reaching net zero emissions by 2050.**

Present throughout the energy value chain, the company **employs 24,000 people worldwide** and distributes its products in **nearly 100 countries.** Customer-focused product and services portfolio meets all consumer needs of around **24 million customers**, whether at home or on the move.

Repsol Campus, Corporate Headquarters in Madrid  
LEED® Platinum certificate, awarded by the prestigious U.S. Green Building Council (USGBC), for new buildings construction







# Chemicals

**Repsol manufactures a wide variety of products, ranging from base petrochemicals to derivatives**

**Base petrochemicals:** ethylene, propylene, butadiene, and benzene.

**Intermediate products:** styrene, propylene oxide, polyether polyols, and propylene glycols.

**Polyolefins:** polypropylene (PP) and PP compounds, both high and low density polyethylene (HDPE and LDPE), metallocene linear low density polyethylene (mLLDPE), ethylene vinyl acetate (EVA) and ethylene butyl acrylate (EBA) copolymers.

**Over 100 scientists and researchers working for you**

Including qualified personnel specialized on Product Stewardship.

Repsol's commitment to R&D is evidence of the company's aim to attain business excellence to meet future horizons.

## Added value

Repsol's Chemicals Division, with a high degree of integration, focuses its strategy on the constant generation of value through differentiated products and services.

# Working for a more sustainable future

At Repsol, we believe in the circular economy, and we run specific projects that minimize the environmental impact of our materials. To this end, we are committed to making our industrial processes increasingly efficient and reducing the carbon footprint of our polymers.

We have a **specialized circular economy department** dedicated to recycling post-consumer materials to drive development of new materials offering solutions based on innovative polyolefins with recycled content.

We **use recycled plastics in critical applications**, creating new markets for plastic waste and driving circularity by giving that waste a new use. As a result, we offer a wide range of polyolefins with recycled content that deliver excellent engineering performance certified under Recyclclass.

We have circular polyolefins obtained by incorporating pyrolysis oil, from chemically recycled plastic waste not suitable for mechanical recycling, together with virgin feedstock into our petrochemical process, reducing the consumption of non-renewable resources.

These circular polyolefins have the same properties and quality as virgin material and hold Food Contact Approval.

We have obtained ISCC PLUS certification for circular and traceable polyolefins that use plastic waste as raw material.

Furthermore, **we offer a full Repsol Reciclex® ISCC Plus Certified Polyolefin Bio-based range, including first-generation Bio (1G) from sustainably sourced crops**, following the ISCC EU 202 best environmental, social, and economic practices; and **second-generation bio-based circular polyolefins (2G) from renewable waste**.

Moreover, our wide range of polyolefins is 100% recyclable.

Our ambition is to **recycle by 2030 the equivalent of 20% of the polyolefins we produce** to support, in conjunction with the other initiatives in Repsol's circular economy strategy, the goal we announced in December 2019: to reach net zero emissions by 2050.

To contribute to the company's emissions neutrality goal, **our chemicals business has launched its 3030 Plan, intended to cut our carbon intensity by 30% by 2030**.

Advancing the circular economy and lowering carbon intensity in our chemicals business will contribute towards transforming Repsol's industrial operations, as well as **developing high-value-added raw materials, making it possible to manufacture an infinite number of products that improve human well-being, safety, and quality of life** while enhancing the environment.



Committed  
to Net Zero  
Emissions

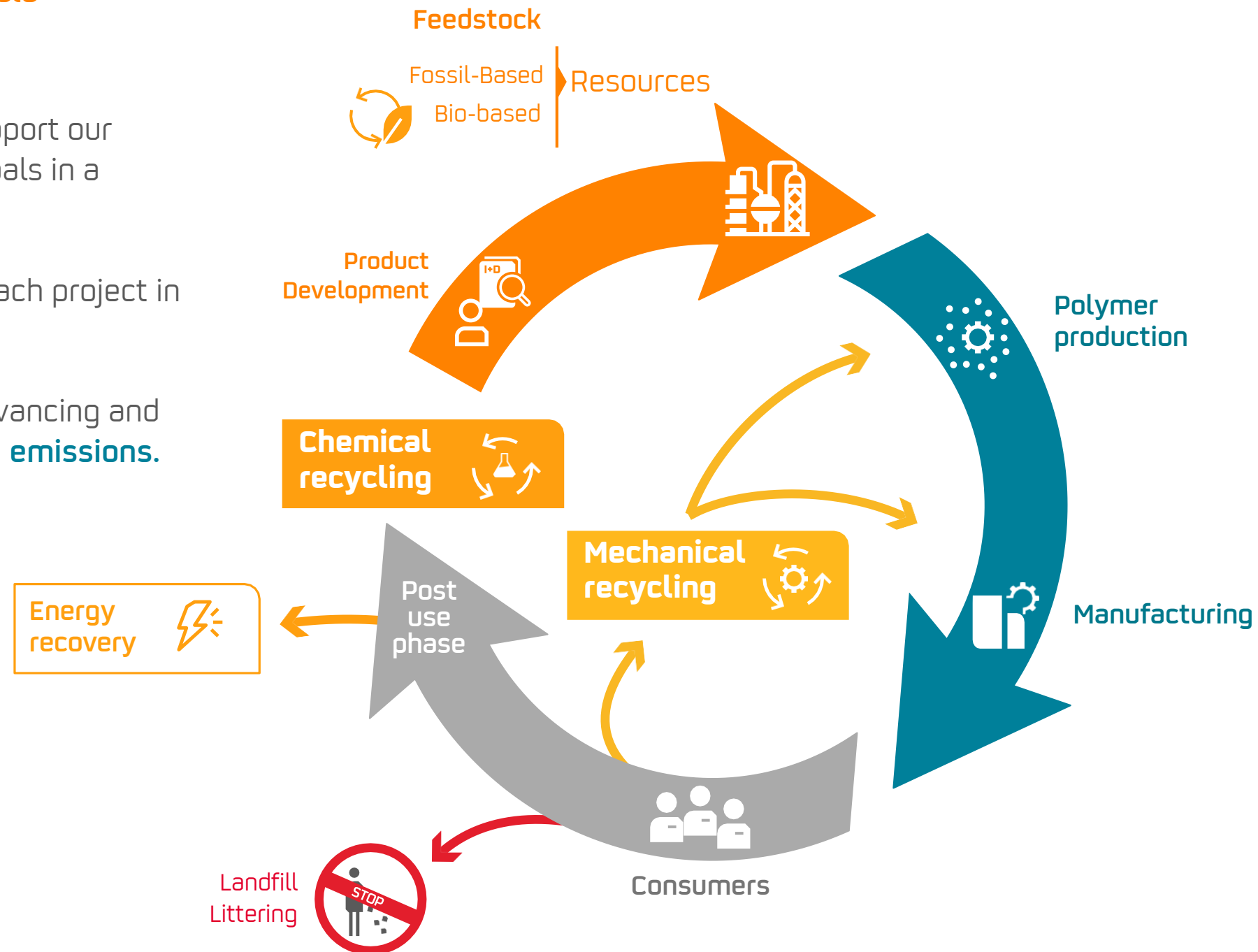




# Repsol Reciclex<sup>®</sup> range

## Advancing the sustainability circle

- Repsol Reciclex<sup>®</sup> products support our clients in their sustainability goals in a comprehensive way.
- With three ranges to support each project in a **personalized way**.
- With a vocation to continue advancing and supporting the goal of **zero net emissions**.



## How do we name our sustainable grades?

All our **mechanical & chemical recycling** grades are branded under Repsol Reciclex®.

**Mechanical recycling** grades equivalent to standard grades include **RX** in their nomenclature.

- For **LDPE/LLPE/HDPE** grades  
Repsol Reciclex® 00**RX**YYY, i.e.: Repsol Reciclex® 70**RX**5203 [incorporating 70% recycled content]
- For **PP** grades  
Repsol Reciclex® **RXP/RXI**YYY, i.e.: Repsol Reciclex® **RXI**52BG000

00**RX**YYY for **LDPE/LLPE/HDPE**  
**RXP/RXI**YYY for **PP**

**Chemical recycling** grades equivalent to standard grades include **CIRC** before their regular nomenclature Repsol Reciclex® **CIRC**YYYYYY, i.e.

Repsol Primeva® P28400 ➤ Repsol Reciclex® **CIRC**P28400

REPSOL  
**Reciclex** 

# The range that fosters circularity

## Advancing towards a circular economy

### MECHANICAL RECYCLING

- Over 30 grades with high proportions of recycled content.
- Applications in film, rigid packaging, auto, blow molding, compounding and others.
- Non-food applications.
- Low carbon footprint.
- Recyclass traceability certificate.
- Consistent quality and homogeneity.
- 100% recyclable.

### CHEMICAL RECYCLING

- 100% recycled plastic raw material.
- Completes the material life cycle.
- Full Repsol range across all applications.
- Same properties as standard range.
- Suitable for sensitive applications: food, hygiene and medical use.
- Low carbon footprint.
- ISCC Plus certificate.
- 100% recyclable.



## How do we name our sustainable grades?

All our **bio-based** grades are branded under Repsol Reciclex®.

- **Bio [1G]** grades equivalent to standard grades include BIO to their regular nomenclature Repsol Reciclex® **BIO**YYYYYY, i.e.: Repsol Primeva® P28400 ➤ Repsol Reciclex® **BIO**P28400
- **Bio Circular [2G]** grades equivalent to standard grades include CBIO to their regular nomenclature Repsol Reciclex® **CBIO**YYYYYY, i.e.: Repsol Primeva® P28400 ➤ Repsol Reciclex® **CBIO**P28400

# The negative carbon footprint polyolefin range

Advancing towards a circular economy

## BIO-BASED

- Ranges includes [Bio 1G] Bio vegetable origin made from sustainable crops (palm oil, soja oil, shea nuts oil and, [Bio 2G] Bio Circular, bio-waste origin, i.e., EVA made from vegetable oil or animal waste like UCO's or brown animal grease.
- Complies with all Food Safety regulations and, like the rest of our range, they are 100% recyclable to close the circle of sustainability.
- 100% bio-based.
- ISCC EU (Renewable Energy Directive 2018/2001) compliant and ISCC Plus certificate.
- Suitable for food, hygiene and medical use.
- 100% recyclable.

REPSOL  
Reciclex







Automotive



Well-being  
& consumer products



Packaging

## Close to 30 grades of Repsol Reciclex<sup>®</sup>

We are embarking on partnerships to find solutions together.

We are committed to innovating to increase the circularity and efficient use of plastic materials.

- Incorporating mechanically and chemically recycled plastics.
- Giving plastic waste a new life to avoid it ending up in landfill.
- Reducing fossil raw material consumption.
- Reducing carbon footprint.
- Committing to technical requirements.
- Helping to meet voluntary commitments and legislative targets.

> Flexible packaging

> Blow molding

> Injection molding

> Sheet & general extrusion

> Fibers molding

> Wire & cable

> Caps and closures

> 100% recycled material

# Flexible packaging

## LDPE



Grade	Recycled material	Similar reference	Color	LLDPE content	MFI	Density	Application
	[%] PCR			[%]	[g/10 min] 190 °C/2.16 Kg	[kg/m³]	
50RX2404F	50	PE033/2203F	Natural	15-25	0.4	924	Thin shrink film, medium duty industrial bags, films for general packaging.
70RX2805F	70	2805F	Natural	35-45	0.8	925	Shrink film, medium duty industrial bags, films for general packaging.
60RX3235G	60	3235FGA	Natural	35-45	2	923	Hygiene overwrap films and easy tear films.
80RX2310F	80		Natural	40-50	1	921	Packaging and medium-capacity bags.
85RX2310F	85		Natural	45-55	1	921	Packaging and medium-capacity bags.



**Sustainability**  
Materials that incorporate plastic post-consumer waste lower the carbon footprint

## LLDPE/mLLDPE

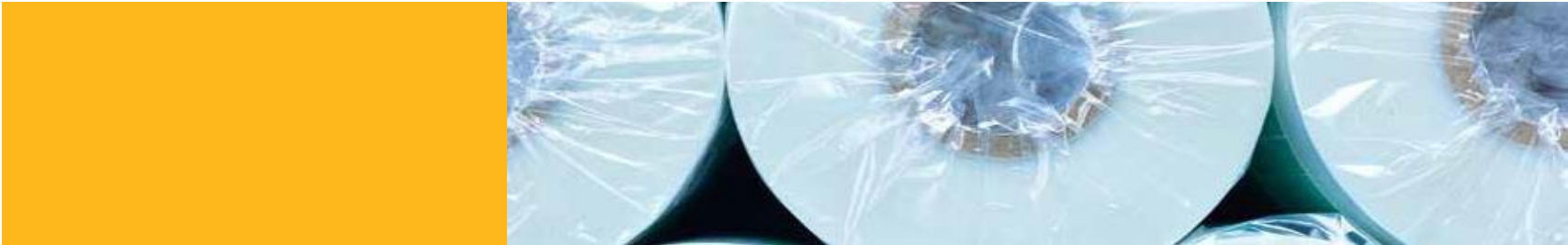
Grade	Recycled material	Similar reference	Color	LLDPE content	MFI	Density	Application
	[%] PCR			[%]	[g/10 min] 190 °C/2,16 kg	[kg/m³]	
70RX2110G	70	MF1810FG	Natural	70-85	1	923	Carrier bags, refuse bags with demanding properties.
72RX2110F	72	MF1810F	Natural	70-85	1	923	Medium duty industrial bags, films for general packaging.
55RX1830F	55	MF1835F	Natural	85-95	3	918	Stretch film.



**Less energy**  
High fluidity, excellent processability



**Downgauging**  
Film thickness reduction



**Blow molding**

The information contained herein is based on REPSOL QUIMICA's current knowledge and experience and is presented in good faith for guidance only. Although REPSOL QUIMICA declares to have been most diligent when including the information contained herein, taking into account that several and different factors may affect the processing, application or use of the products, the convertor shall be responsible in every case for the conditions under which the products are transformed as well as for the final use given to them. REPSOL QUIMICA warns that this information may undergo variations or improvements; therefore REPSOL QUIMICA is not obliged to reflect these in this document or to communicate them to whomever may have access to it. Moreover, these readers should be aware that some or all of the products might be protected by intellectual property rights. © REPSOL QUIMICA, S.A. 2024. All rights reserved.



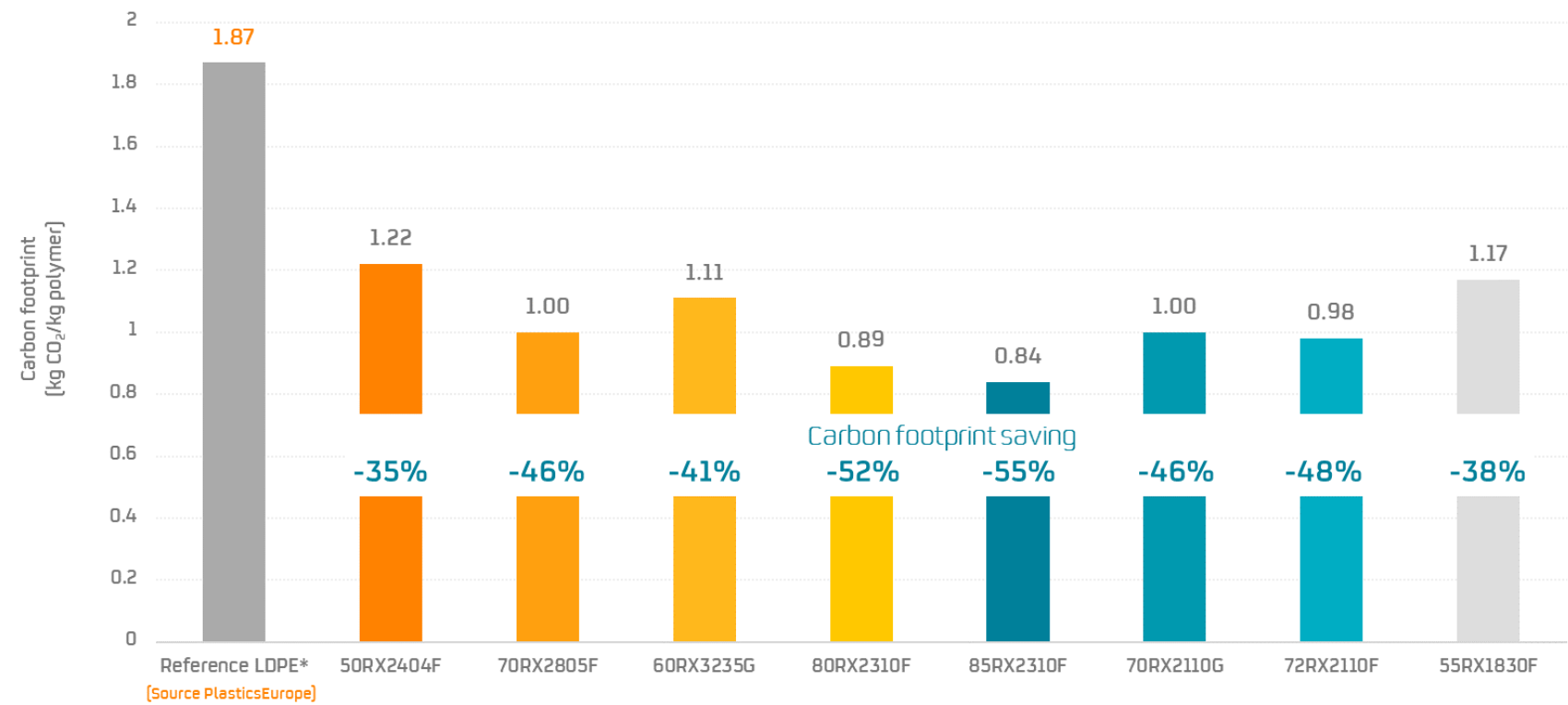
# Flexible packaging

LDPE



## Carbon footprint saving

The results are based on Repsol Internal study; has not undergone ISO critical reviews



**Sustainability**  
Materials that incorporate plastic post-consumer waste lower the carbon footprint



**Less energy**  
High fluidity, excellent processability



**Downgauging**  
Film thickness reduction



Blow molding



Monomaterial solutions that facilitate the recyclability of industrial film. They incorporate post-consumer recycled materials improving their sustainability and maintaining excellent properties



The information contained herein is based on REPSOL QUIMICA's current knowledge and experience and is presented in good faith for guidance only. Although REPSOL QUIMICA declares to have been most diligent when including the information contained herein, taking into account that several and different factors may affect the processing, application or use of the products, the convertor shall be responsible in every case for the conditions under which the products are transformed as well as for the final use given to them. REPSOL QUIMICA warns that this information may undergo variations or improvements; therefore, REPSOL QUIMICA is not obliged to reflect these in this document or to communicate them to whomever may have access to it. Moreover, these readers should be aware that some or all of the products might be protected by intellectual property rights. © REPSOL QUIMICA, S.A. 2024. All rights reserved.

# Blow molding

HDPE



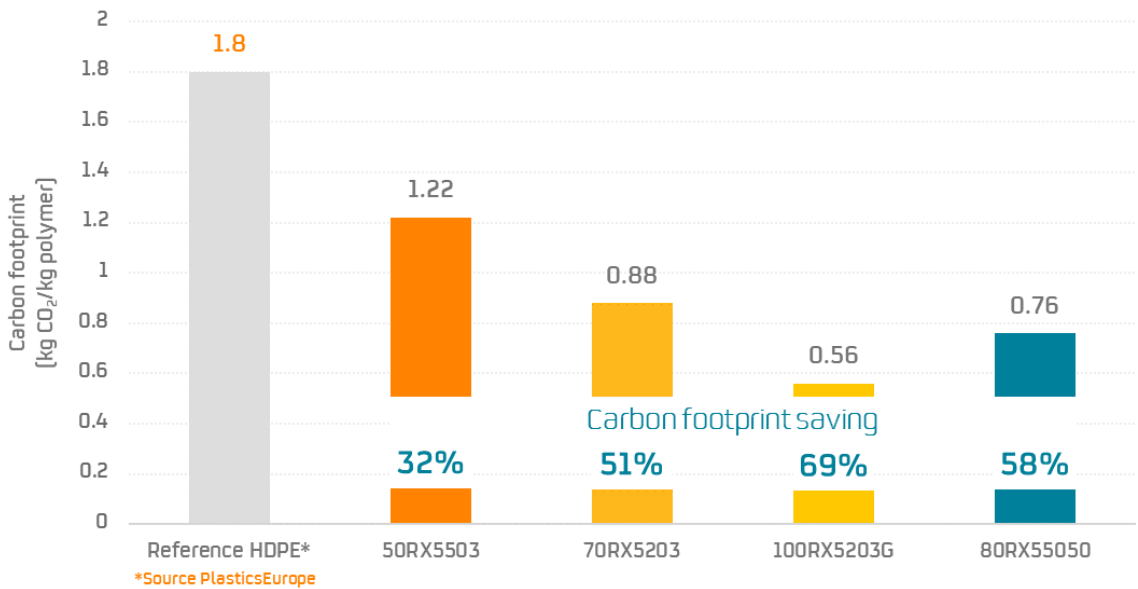
Grade	Recycled material	Similar reference	Color	MFI	Density	Tensile strength at break	ESCR	Flexural modulus	Application
	[%] PCR			[g/10 min]	[kg/m <sup>3</sup> ]	[MPa]	[h]	[MPa]	
50RX5503	50	5503	Natural and grey	0,25 *	955	20	100	1100	Blow molded containers up to 10 liters for liquid detergents and chemicals.
70RX5203	70	5203	Natural	0,25 *	955	20	60	1100	Blow molded containers up to 10 liters for liquid detergents and chemicals.
100RX5203G	100	5203	Grey	0.3 *	955	17	40	1150	Blow molded containers up to 10 liters for liquid detergents and chemicals.
80RX55050	80	55050	Light grey	10,5 **	960	25	200	950	Blow molding of jerrycan containers and industrial packaging for ADR.

\* MFI [190 °C / 2.16 kg]

\*\* MFI [190 °C / 21.6 kg]

## Carbon footprint saving

The results are based on Repsol Internal study; has not undergone ISO critical reviews



Flexible packaging



Injection molding

The information contained herein is based on REPSOL QUIMICA's current knowledge and experience and is presented in good faith for guidance only. Although REPSOL QUIMICA declares to have been most diligent when including the information contained herein, taking into account that several and different factors may affect the processing, application or use of the products, the convertor shall be responsible in every case for the conditions under which the products are transformed as well as for the final use given to them. REPSOL QUIMICA warns that this information may undergo variations or improvements; therefore, REPSOL QUIMICA is not obliged to reflect these in this document or to communicate them to whomever may have access to it. Moreover, these readers should be aware that some or all of the products might be protected by intellectual property rights. © REPSOL QUIMICA, S.A. 2024. All rights reserved.

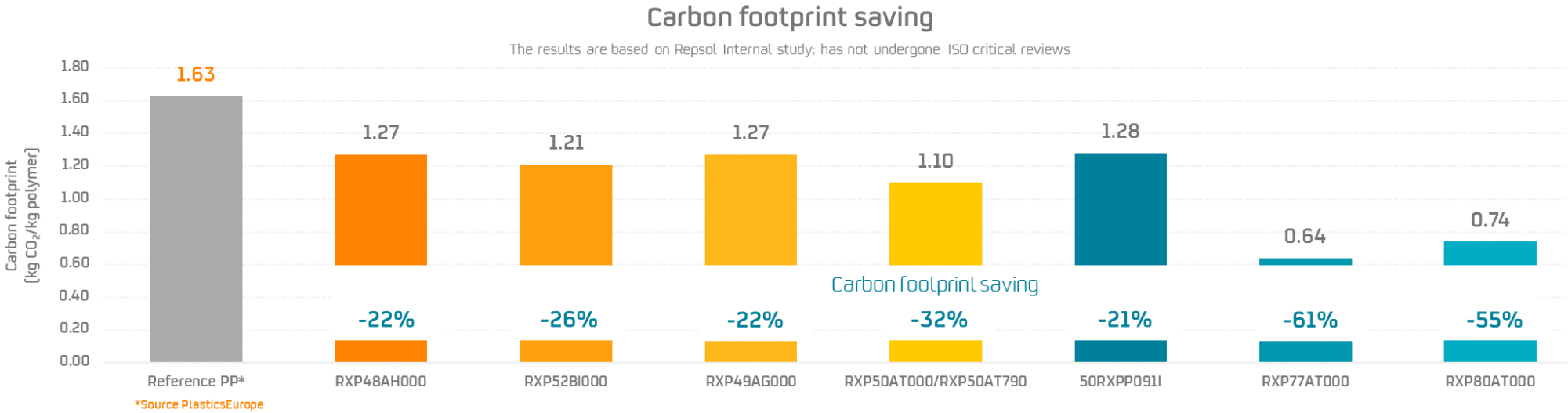


# Injection molding

## Polypropylene



Grade	Recycled material	Similar reference	Color	MFI	Density	Flexural modulus	Charpy impact strength	Application
	(%) PCR			(g/10 min) 230° C/2,16 kg	(kg/m³)	(MPa)	23°C, notched (kJ/m²)	
RXP48AH000	40	PP080G2M	Light grey (RAL 7038)	16	905	1550	4	Containers and rigid packaging, garden, and domestic furniture, base product for compounds, caps, and closures.
RXP52BI000	50	PB170G2M	Light grey (RAL 7038)	10	910	1100	10	Domestic and leisure furniture, square boxes and round storage containers for consumer appliances, flowerpots, buckets.
RXP49AG000	40	PB190K2M	Light grey (RAL 7038) and dark grey (RAL 7021)	30	905	1200	7.9	Domestic and leisure furniture, square boxes and round storage containers for consumer appliances, flowerpots, buckets.
RXP50AT000 / RXP50AT790	50	PB196K1M	Light grey (RAL 7038) and ivory (RAL 9016)	40	935	1450	4	Domestic and leisure furniture, square boxes and round storage containers for consumer appliances, flowerpots, buckets.
RXP80AT000	80	PB190K2M	Light grey (RAL 7038)	40	940	1200	4.5	Domestic and leisure furniture, square boxes and round storage containers for consumer appliances, flowerpots, buckets.
50RXPP091I	50		Black	35		3000	4	Automotive and structural parts: under the bonnet parts subjected to severe mechanical stresses (light housings, heat, and ventilation housings, filters), technical pieces, and furniture.
RXP77AT000	80		Black	12		1600	4.5	Pallets, furniture, and technical parts, in general.



Blow molding



Sheet & general extrusion

The information contained herein is based on REPSOL QUIMICA's current knowledge and experience and is presented in good faith for guidance only. Although REPSOL QUIMICA declares to have been most diligent when including the information contained herein, taking into account that several and different factors may affect the processing, application or use of the products, the convertor shall be responsible in every case for the conditions under which the products are transformed as well as for the final use given to them. REPSOL QUIMICA warns that this information may undergo variations or improvements; therefore, REPSOL QUIMICA is not obliged to reflect these in this document or to communicate them to whomever may have access to it. Moreover, these readers should be aware that some or all of the products might be protected by intellectual property rights. © REPSOL QUIMICA, S.A. 2024. All rights reserved.

# Sheet and general extrusion

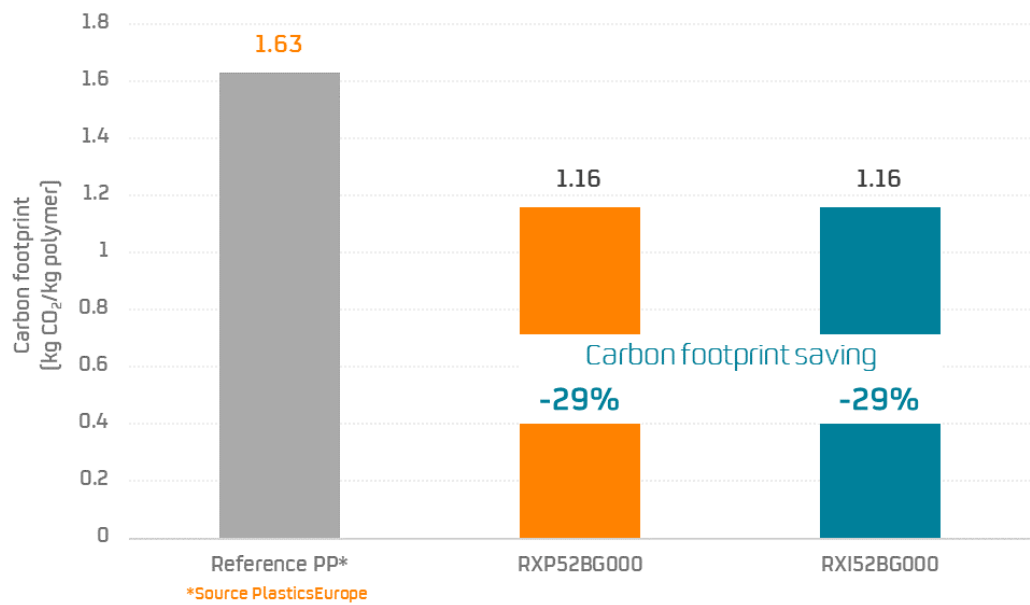
Polypropylene



Grade	Type of recycled material	Recycled material	Similar reference	Color	MFI	Density	Flexural modulus	Charpy impact strength	Application
		%			[g/10 min] 230 °C/2,16 kg	[kg/m <sup>3</sup> ]	[MPa]	23°C, notched [kJ/m <sup>2</sup> ]	
RXP52BG000	PCR	50	PB130G1F	RAL 7038	1.5	910	1400	10	Sheet extrusion. Boards and profiles.
RXI52BG000	PIR	50	PB130G1F	Natural	1	905	1500	10	Sheet extrusion. Boards and profiles.

## Carbon footprint saving

The results are based on Repsol Internal study; has not undergone ISO critical reviews



Injection molding



Fibers molding

The information contained herein is based on REPSOL QUIMICA's current knowledge and experience and is presented in good faith for guidance only. Although REPSOL QUIMICA declares to have been most diligent when including the information contained herein, taking into account that several and different factors may affect the processing, application or use of the products, the convertor shall be responsible in every case for the conditions under which the products are transformed as well as for the final use given to them. REPSOL QUIMICA warns that this information may undergo variations or improvements; therefore, REPSOL QUIMICA is not obliged to reflect these in this document or to communicate them to whomever may have access to it. Moreover, these readers should be aware that some or all of the products might be protected by intellectual property rights. © REPSOL QUIMICA, S.A. 2024. All rights reserved.



# Fibers molding

Polypropylene



Grade	Type of recycled material	Recycled material	Similar reference	Color	MFI	Flexural modulus	Charpy impact strength	Application
		%			[g/10 min] 230 °C/2,16 kg	[MPa]	23°C, notched [kJ/m²]	
RXP33AA000	PCR	30	PP020G1E / PP030G1E	Grey	2	1600	5	Monofilament, strap and sheet extrusion.
RXP39HY000	PIR	30	PP086Y3E	Natural	25	1600	4	Spunbond, BCF and CF.
RXP59HY000	PIR	50	PP086Y3E	Natural	25	1600	4	Spunbond, BCF and CF.

## Carbon footprint saving

The results are based on Repsol Internal study; has not undergone ISO critical reviews



Lightweight



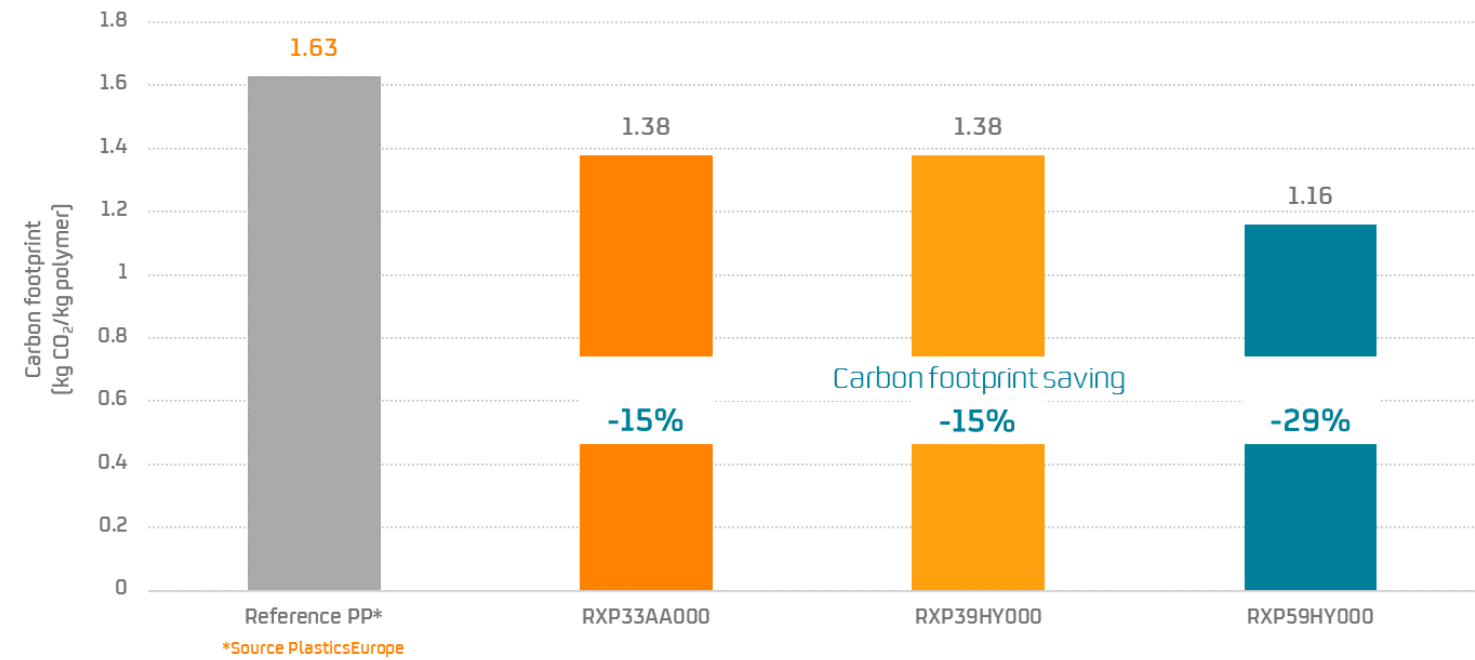
Reusable



Recyclable



Recycled content



New PP grade incorporate recycled material while ensuring consistency in quality and functionality



Sheet & general extrusion



Wire & cable

The information contained herein is based on REPSOL QUIMICA's current knowledge and experience and is presented in good faith for guidance only. Although REPSOL QUIMICA declares to have been most diligent when including the information contained herein, taking into account that several and different factors may affect the processing, application or use of the products, the convertor shall be responsible in every case for the conditions under which the products are transformed as well as for the final use given to them. REPSOL QUIMICA warns that this information may undergo variations or improvements; therefore, REPSOL QUIMICA is not obliged to reflect these in this document or to communicate them to whomever may have access to it. Moreover, these readers should be aware that some or all of the products might be protected by intellectual property rights. © REPSOL QUIMICA, S.A. 2024. All rights reserved.

# Wire & cable

## LDPE



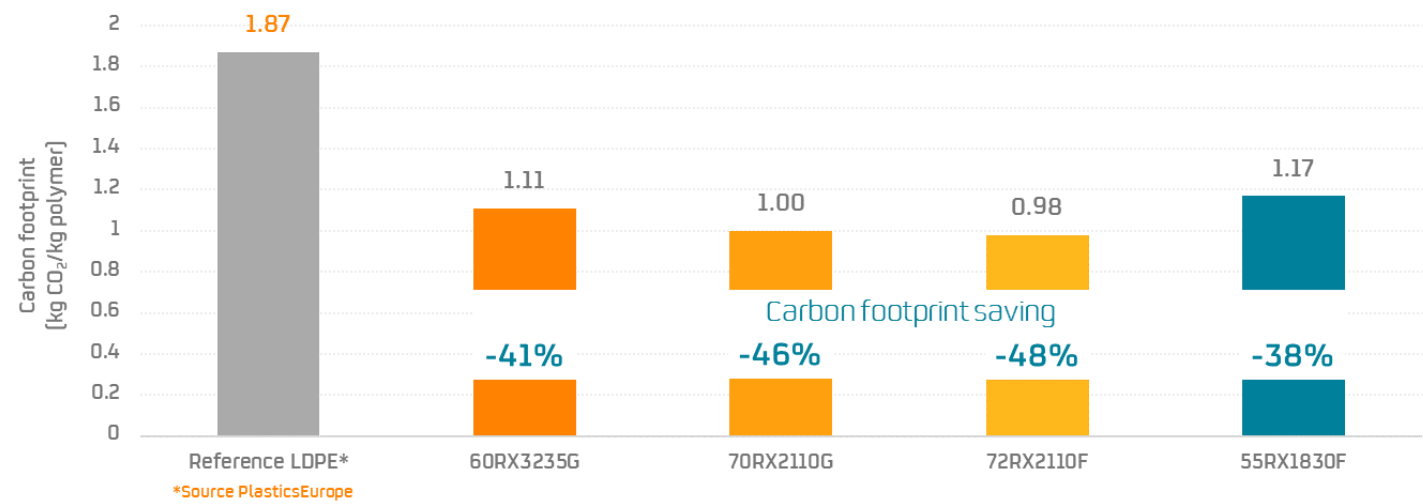
Grade	Recycled material	Similar reference	Color	LLDPE content	MFI	Density	Application
	[%] PCR			[%]	[g/10 min] 190 °C/2.16 Kg	[g/cm <sup>3</sup> ]	
60RX3235G	60	3235FGA	Natural	35-45	2	923	LDPE for jacketing and bedding compounds.

## LLDPE/mLLDPE

Grade	Recycled material	Similar reference	Color	LLDPE content	MFI	Density	Application
	[%] PCR			[%]	[g/10 min] 190 °C/2.16 Kg	[g/cm <sup>3</sup> ]	
70RX2110G	70	MF1810FG	Natural	70-85	1	923	LLDPE for jacketing and bedding compounds.
72RX2110F	72	MF1810F	Natural	70-85	1	923	LLDPE for jacketing and bedding compounds.
55RX1830F	55	MF1835F	Natural	85-95	3	918	LLDPE for jacketing and bedding compounds.

### Carbon footprint saving

The results are based on Repsol Internal study; has not undergone ISO critical reviews



Fibers molding



Caps & closures

The information contained herein is based on REPSOL QUIMICA's current knowledge and experience and is presented in good faith for guidance only. Although REPSOL QUIMICA declares to have been most diligent when including the information contained herein, taking into account that several and different factors may affect the processing, application or use of the products, the convertor shall be responsible in every case for the conditions under which the products are transformed as well as for the final use given to them. REPSOL QUIMICA warns that this information may undergo variations or improvements; therefore, REPSOL QUIMICA is not obliged to reflect these in this document or to communicate them to whomever may have access to it. Moreover, these readers should be aware that some or all of the products might be protected by intellectual property rights. © REPSOL QUIMICA, S.A. 2024. All rights reserved.



# Caps and closures

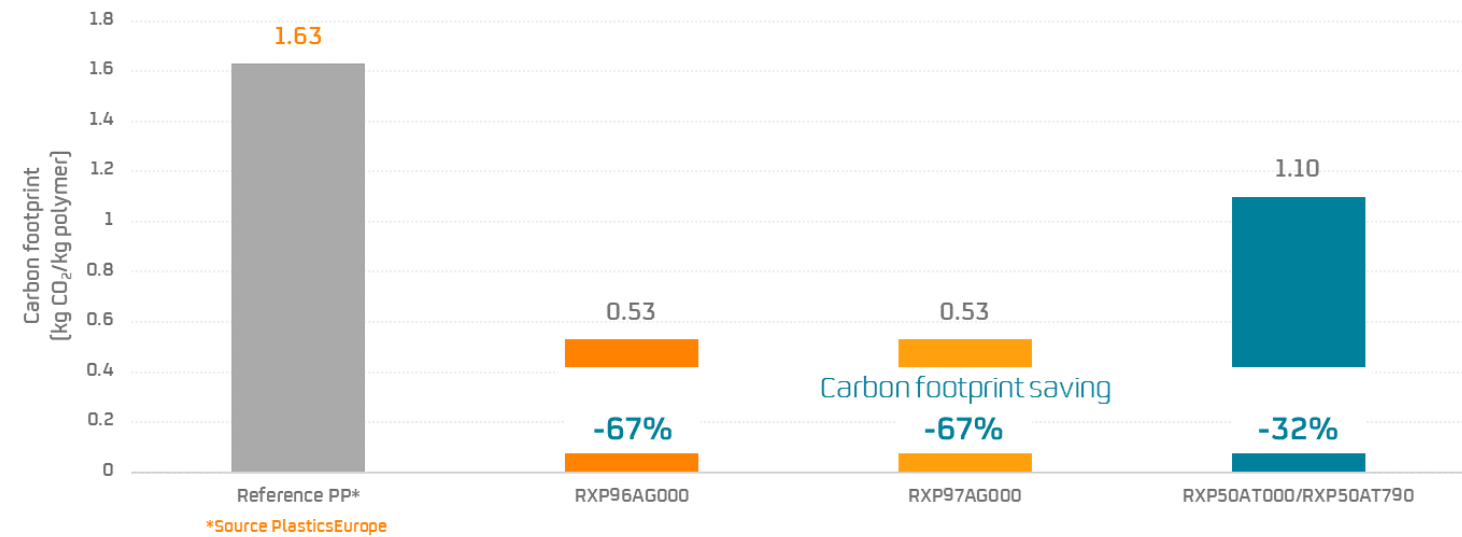
Polypropylene



	Recycled material	Similar reference	Color	MFI	Density	Flexural modulus	Charpy impact strength	Application
	[%] PCR			(g/10 min) 230° C/2,16 kg	(g/cm³)	(MPa)	23°C, notched (kJ/m²)	
RXP96AG000	100		Light grey (RAL 7038)	18-25	915	1100	4.5	Caps and closures / general purpose.
RXP97AG000	100		Light grey (RAL 7000)	17-27	910	1100	4	Caps and closures / general purpose.
RXP50AT000 / RXP50AT790	50	PB196K1M	Light grey (RAL 7038) and white (RAL 9016)	40	935	1450	4	Caps and closures / general purpose.

## Carbon footprint saving

The results are based on Repsol Internal study; has not undergone ISO critical reviews



Wire & cable



100% recycled materials

The information contained herein is based on REPSOL QUIMICA's current knowledge and experience and is presented in good faith for guidance only. Although REPSOL QUIMICA declares to have been most diligent when including the information contained herein, taking into account that several and different factors may affect the processing, application or use of the products, the convertor shall be responsible in every case for the conditions under which the products are transformed as well as for the final use given to them. REPSOL QUIMICA warns that this information may undergo variations or improvements; therefore, REPSOL QUIMICA is not obliged to reflect these in this document or to communicate them to whomever may have access to it. Moreover, these readers should be aware that some or all of the products might be protected by intellectual property rights. © REPSOL QUIMICA, S.A. 2024. All rights reserved.

# 100% Recycled materials

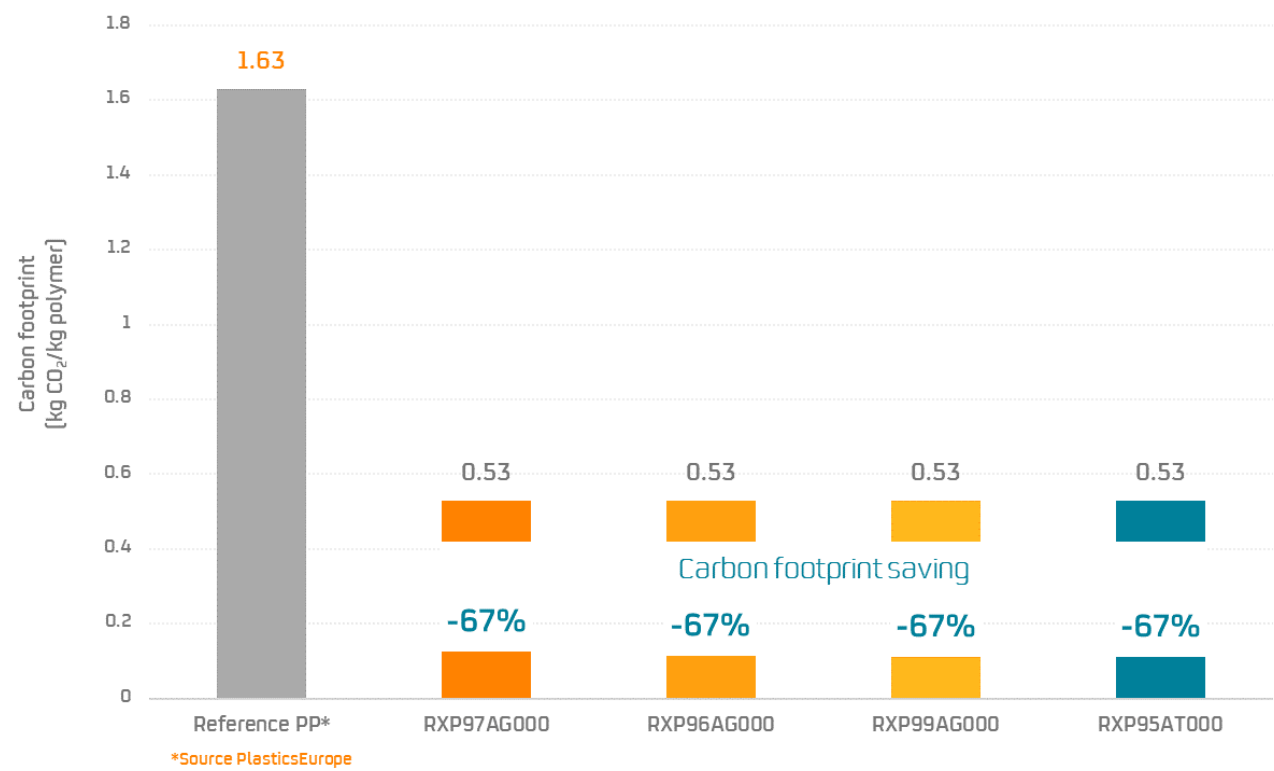
Polypropylene



Grade	Recycled material	Color	MFI	Density	Flexural modulus	Charpy impact strength	Application
	[%] PCR		[g/10 min] 230° C/2,16 kg	[g/cm <sup>3</sup> ]	[MPa]	23°C, notched [kJ/m <sup>2</sup> ]	
RXP97AG000	100	Light grey (RAL 7038)	17-27	910	1100	4	Auto-formulation of compounding grades, compounding and masterbatch of additives.
RXP96AG000	100	Light grey (RAL 7038)	18-25	915	1100	4.5	Auto-formulation of compounding grades, compounding and masterbatch of additives.
RXP99AG000	100	Light grey (RAL 7038)	40-45	915	1100	4	Auto-formulation of compounding grades, compounding and masterbatch of additives.
RXP95AT000	100	Black	9-15	950	1200	20	Auto-formulation of compounding grades, compounding and masterbatch of additives.

## Carbon footprint saving

The results are based on Repsol Internal study; has not undergone ISO critical reviews



Caps & closures

The information contained herein is based on REPSOL QUIMICA's current knowledge and experience and is presented in good faith for guidance only. Although REPSOL QUIMICA declares to have been most diligent when including the information contained herein, taking into account that several and different factors may affect the processing, application or use of the products, the convertor shall be responsible in every case for the conditions under which the products are transformed as well as for the final use given to them. REPSOL QUIMICA warns that this information may undergo variations or improvements; therefore, REPSOL QUIMICA is not obliged to reflect these in this document or to communicate them to whomever may have access to it. Moreover, these readers should be aware that some or all of the products might be protected by intellectual property rights. © REPSOL QUIMICA, S.A. 2024. All rights reserved.



# Safety and quality are our priority

Excellence is intrinsic to Repsol's values. It infuses our daily work and helps guide our decisions and actions, contributing to achieve the commitment made to our customers, stakeholders, employees, suppliers / partners, and society to build a better future.

Petrochemical complexes and logistics centers all have ISO 45001. **We are food safety leaders.** All our facilities are FSSC 22000 certified in recognition of our food safety risk management processes throughout the supply chain.

Technical Data Sheets and MSDS are available on: [www.repsol.com](http://www.repsol.com)

All petrochemical plants are compliant with the current ISO 9001 standards, for the quality of processes from manufacture to distribution, transport management and end product warehousing.

In February 2019 we obtained the ISCC PLUS certification in all our polyolefin production centers. **We are one of the leading companies in the production of circular polyolefins that use recycled plastic waste as raw material**, and this certification is an example of our commitment to promote the Circular Economy of our materials.

## Certifications

Petrochemical plants, plants and logistics	All industrial complex	Puertollano, Tarragona and Monzón plants	Puertollano and Monzón plants	Puertollano, Tarragona and Sines
ISO 45001	FSSC 22000	IATF 16949	Recyclclass	ISO 50001
	All petrochemical plants			ISO 14001
	ISO 9001			ISO 14064
	ISCC Plus			





# Environment

**Repsol's purpose is to become a net-zero emissions company by 2050, and our 2021-2025 Strategic Plan enables us to continue successfully advancing our multi-energy commitment.**

We have set up and deployed an ambitious CO<sub>2</sub> program reduction that pursues a 40% reduction in SCOPE 1 & 2 emissions by 2030 (2017 as reference year) and zero emissions before 2050. Energy efficiency programs to reduce energy consumption and GHG emissions are one of the key elements of our strategy in the short term, followed by deep process electrification and CCUS. Biofeedstocks and renewable electricity will have a relevant role in this transition.

These programs pursue long-term targets made public to facilitate their progress by the stakeholders. In this sense, Repsol Química is committed to a reduction of 0.26 million tons per year of GHG emissions in the 2021-2025 Strategic Plan and a 1.3 million tons per year reduction until 2030 with a roadmap to be a net-zero company before 2050.

Regarding SCOPE 3 emissions, Repsol Química will contribute to the CO<sub>2</sub> emissions reduction at the plastics' end of life with our circularity projects, while we offer sustainable solutions for our clients: 100% recyclable polyolefins.

All petrochemical complexes have ISO 14001 certification for their environmental management and the reduction of the impact of their facilities, and ISO 14064 for the annual verification of greenhouse gas (GHG) emissions. In addition, the chemical area of our complexes in Tarragona (2015), Puertollano (2013), and Sines (2016) has implemented an Energy Management System according to the requirements indicated in the International Standard ISO 50001. This system is dedicated to developing and implementing our organization's energy policy and managing the energy aspects of our activities, products, or services. The objective is to increase and improve our energy efficiency based on systems implementation aimed at continuous energy performance improvement, thus contributing to more efficient and sustainable energy use.

Repsol Química has released on a yearly frequency the carbon footprint of all its product families since 2020, considering the "cradle to gate" scope based on ISO 14067.

*Collaboration*

*Results orientation*

*Inspiring leadership*

*Intrapreneurship*

*Accountability*





## Chemicals Customer Care

### Spain

Tel.: 900 10 32 39  
Tel.: +34 91 753 18 01

### Italy

Tel.: 800 60 509 999  
Tel.: +34 91 753 18 04

### Portugal

Tel.: 800 60 501 111  
Tel.: +34 91 753 18 05

### Germany

Tel.: 800 60 504 444  
Tel.: +34 91 753 18 00

### France

Tel.: 800 60 503 333  
Tel.: +34 91 753 18 02

### United Kingdom

Tel.: 800 60 502 222  
Tel.: +34 91 753 18 03

[sacrq@repsol.com](mailto:sacrq@repsol.com)

[www.repsol.com](http://www.repsol.com)



## **Corporate Headquarters**

Méndez Álvaro, 44

28045 Madrid. Spain

Tel.: +34 91 753 81 00

[www.repsol.com](http://www.repsol.com)

## **Technical Service & Development Repsol Technology Lab**

Agustín Betancourt, s/n

28935 Móstoles, Madrid. Spain

Tel.: +34 91 753 86 00

[atd\\_poliolefinas@repsol.com](mailto:atd_poliolefinas@repsol.com)